

PLUSPTT DISPATCH CONSOLE

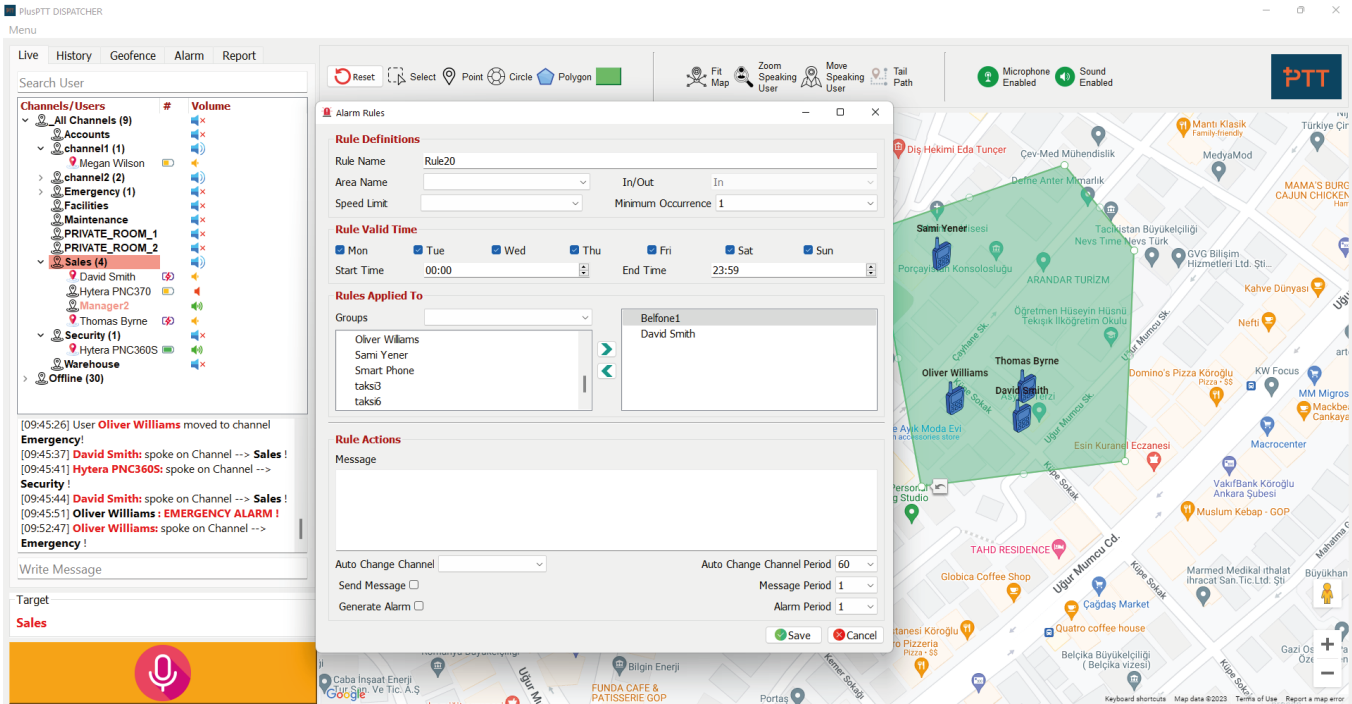


PlusPTT Dispatch Console is a desktop application running on Windows operating system. By using voice communication, emergency alarm and real-time positioning, the operator can quickly direct the staff and make the daily work flow healthier and more efficient. Being able to evaluate the instant terminal information coming from the field as a whole gives the operator the ability to make the right decisions on time. Also, being able to respond quickly to emergency alarms helps to minimize various risks on the workplace.



Geo-Fence

Geo-fence boundaries are marked on the map by the dispatcher. He establishes the rules for violations in these areas and the appropriate responses. When a user in the field disobeys the established rule, the dispatch console issues an alarm and displays the pertinent user information. The user terminal can be forced to do actions like alarm, violation announcement, or channel change.



Location Tracking

Dispatcher can check the location history for the Terminals over the given time period or track the Terminals in real time.

Terminal Information

Dispatcher has access to information on the brand, model, SIM, active connection type (WiFi, GSM), active Bluetooth, uptime, application version, battery, and sound level of the terminals.

Remote Disable

A member of the group's voice function may be remotely disabled by the dispatcher. This member is unable to use the terminal to communicate. However the dispatcher can locate the relevant terminal on the map.

SINGLE CALL

One-way announcement or one-on-one call to the user

GROUP CALL

One-way announcement to channel or selected group

TEMPORARY GROUP

Conferencing with the channel or the group created by selecting

EMERGENCY ALARMS

Flexible SOS alarm configuration

BATTERY & SOUND LEVEL MONITORING

Instantly monitoring the battery and sound level of the terminals

AUTO CHANNEL SWITCHING

Automatic channel switching when the terminal enters the defined area

TRANSCRIPTION

Transcribe announcements and show them as notifications or create channel/user transcripts

LOCAL AND CLOUD RECORDING FEATURE

Record conversations to local PC or cloud server